



HANOVER CONSERVANCY

*Protecting land & water
in our community*

HANOVER HIKE OF THE MONTH

December – Fullington Farm & Old Highway 34

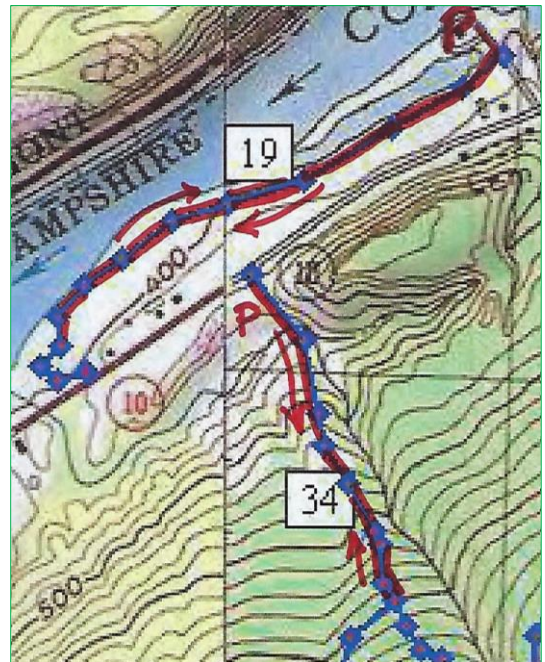
River path: 1.2 mi., 40 min. flat walk along the river (round trip)
Historic road: 0.6 mi., 25 min. hike, 240' elevation gain (round trip)

Driving directions:

- From Downtown Hanover, drive N on N. Park Street and turn R onto Route 10N.
- Drive past the golf course, through a rotary, past the Richmond School, and through a smaller rotary.
- Continue 1.5 miles past the smaller rotary on Route 10 and turn L at the entrance for Wilson's Landing.
- Park in the gravel-surfaced lot next to the Connecticut River. Sunset is an especially lovely time for a walk on the river path, but give yourself plenty of daylight if you plan to hike Old Highway 34.

What you should know:

- ❖ You can opt to explore just the gentle path along the river, the more challenging Old Highway 34, or both to get a fuller sense of the variable character of Hanover's Connecticut River corridor.
- ❖ You'll be walking on lands owned by the Town of Hanover, Friends of Hanover Crew (briefly) and Dartmouth College. Conservation easements protect some but not all of this land.
- ❖ Dogs are welcome but must be under your control; please pick up after your pet. You will need a leash.

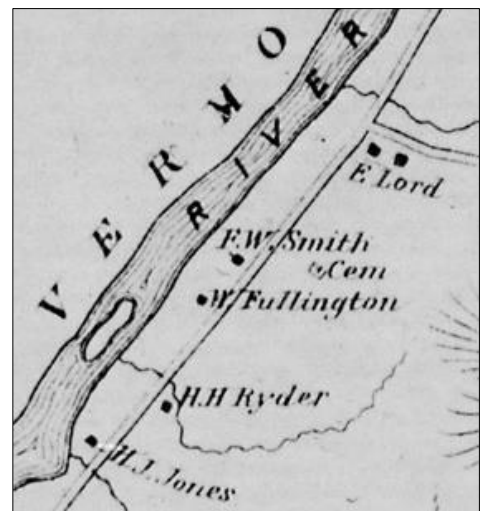


HIKING DIRECTIONS – Fullington Farm River Path

- Begin at Wilson's Landing. This town-owned public river access area is named for Wilson Fullington, one of a family of riverfront farmers who lived in the white farmhouse you passed on the way in, with its ample gambrel dairy barn. That property and 2.4 acres of land are now owned by the Friends of Hanover Crew.
- Before starting your hike, walk to the water's edge. From here, you enjoy a splendid view up the mighty Connecticut, the largest river in New England. This area is the scene of many regional crew races on the flat water impounded by Wilder Dam, a few miles downstream. Flat-topped Smarts Mountain in Lyme appears on the horizon to the N. The Hanover Conservation Commission recently led an extensive effort to improve the public boat landing here, adding picnic tables, comfortable benches, a dock, improved boat launch, and timber-framed information kiosk.
- The flooding of this area by Wilder Dam in 1950 changed the shoreline, and this is a great place to look for waterfowl in the quiet backwater and for smaller birds nesting in the shrubby growth nearby. At this season the slender cattails are dispersing their seeds and look like they're wearing shaggy fleece coats. You can admire the festive scarlet twigs of red osier dogwood – there's a good clump next to the boat landing. This

native New England shrub, which grows well in wet places, is highly valued by wildlife for its nutritious white berries. You won't see those because they don't last long!

- Leave your car and walk back up the gravel drive as far as the sign at R indicating that this land is protected by the Land Conservation Investment Program and the Trust for NH Lands. This was New Hampshire's first venture into conservation on a state-wide scale, authorized by the Legislature in 1987, which appropriated \$25 million that was spent (with \$3.3 million of private funds) to protect over 100,000 acres of much appreciated land before the program closed in 1993. The Huntington Hill lands nearby in Hanover were also protected through this program. The Hanover Conservancy, then known as the Hanover Conservation Council, led a fund-raising campaign for the local match. The land remains privately owned but is now protected by a permanent conservation easement held by the Town.
- Enough talk, let's walk! Turn R off the drive and onto the mown path just before the gravel path leading to the crew boathouse. Turn S along the river. For the next few minutes you'll have a good view of the backwater, where dabbling ducks and other waterfowl shelter in this quiet area off the mainstem, especially during the fall migration. The Connecticut River is a major migration corridor for these and other birds. On the afternoon we walked this path, the lowering sun lit the white breast of a migrating common merganser, its rapid wingbeats echoing the intent of its outstretched neck as it flew south, low and fast, over the water. (R – male in flight)
- Meadowsweet, goldenrod, and other rough herbs and shrubs grow near the bank, along with sumac, red and silver maple. This riparian buffer helps capture any sediment in the runoff from the fields that might be headed toward the river. Common among them is invasive honeysuckle, easily picked out with its scrappy bark, low arching branches, and opposite buds. This shrub is especially obvious around the gullies and cavities in the bank at the bottom of the field.
- About 8 minutes into your walk, pass through a gap in a hedgerow marking the boundary of a larger field. You're in a world apart – while you can hear the sounds of cars on Route 10 above and Route 5 across the river, your view is much more wholesome - all rolling fields and river. The rich soils under the sod, a gift of the river, are among the most fertile in the country. Indeed, they are among the most valuable agricultural soils in Hanover.
- The mown path curves R around a gully; glance to the N for a nice view of Smarts Mountain and the point of wet land extending downstream from Wilson's Landing.
- Soon the big white barn of the Dartmouth Organic Farm comes into view above at L, along with the low building now housing the Hampshire Cooperative Nursery School. These are the current uses of what was the last dairy farm of any significance in Hanover – the Dartmouth Dairy, also known as the Fullington Farm. Four generations of Fullingtons worked this land, most recently with a milk processing and bottling plant run by Haslett Fullington and his brother, Wilson. Their fleet of trucks delivered milk produced by their herd of Guernseys to the college and beyond. Dartmouth bought the property in 1972.
- The Fullingtons had been on the land since at least 1860, and lived in the c. 1820 cape house that stood near the large and handsome early barn. In 1885, the Grafton County Gazetteer listed William Fullington as farming 220 acres with 300 head of registered Merino sheep and a sugarbush of 120 maples. The College tore down the nearly 200-year-old farmhouse in the summer of 2017. (R- 1892 map of the area)

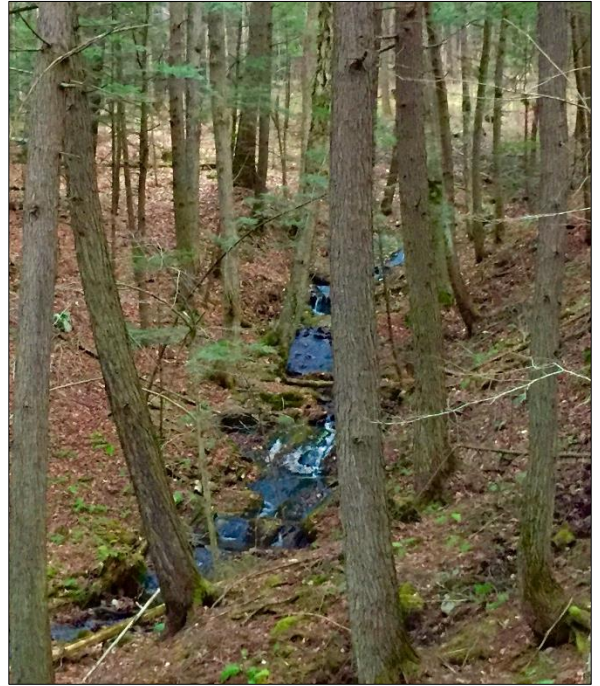


- Today, your path passes an experimental planting area, bee hives, and a nursery of evergreen and deciduous trees on the fields where the Fullingtons once grew feed for their cows or pastured their sheep. The path approaches the south boundary where a gravel drive curves up to Route 10. You can walk back to your car along the road, but it's more fun to retrace your steps and head north on the mown path along the river.
- As you do, note the sole many-stemmed tree standing nearby on the riverbank, a sole representative of the grand and towering silver maple floodplain forest that once blanketed the riverbottom here – after the glacier left but before European settlers cleared the alluvial plains for farming, before the Smiths and Fullingtons, and before Wilder Dam inundated the shoreline. Silver maples tolerate flooding and are supremely adapted to such a setting.
- As you return N, the pine-studded crest of an esker looms beyond the barn roof. This is part of a ribbon of sand left behind by melting water under the glacier as it covered this area thousands of years ago. You can explore another piece of this geological ribbon at the South Esker (Hanover Hike of the Month, August 2016).
- The low sun of the approaching winter plays tricks as you walk N along the river. Your shadow reaches forty feet ahead and the light reflects off the river, illuminating golden brown oak leaves still clinging to their branches. Oaks are thought to have evolved in the south and never developed the knack of dropping their leaves in fall as those of northern maples and birches do.
- Pass through the hedgerow and enjoy a fine view of the beautiful white dairy barn.
- It appears that both the old farms you pass on this walk have been present for centuries - no surprise given their desirable soils. The fine two-story farmhouse now owned by the Friends of Hanover Crew dates from 1771, according to town records. With its gambrel roofed barn, they are the picture of a prosperous dairy farm. Historic maps indicate that this riverfront farm site was occupied by one I. Smith in 1855 (when the Fullington Farm was owned by a B. Tisdale), and in 1892 by F. W. Smith. We're guessing that the Fullingtons bought their neighbors' place sometime around 1910 to make room for a son and his family, updating the old Smith farmhouse with a generous front porch that beckons today.
- Turn L toward the boat landing and back to your car. Resolve to return for a family picnic by the river!

HIKING DIRECTIONS – Old Highway 34

- If you have another half hour and energy to spare, cap off your adventure with a hike into the past. If it is hunting season, you'll want to dress in fashion – blaze orange.
- You can either walk or drive to the nearby trailhead. Return to Route 10, turn R and then L up a short gravel drive. This leads to an unmarked parking area N of the flat old river terrace that today sees less action from glacial Lake Hitchcock and more from soccer players. In winter, trucks deliver snow plowed from downtown streets to this spot, allowing it to melt into the ground close to the river where any contaminants mixed with the snow cannot interfere with drinking water wells.
- Walk around the green metal gate across the entrance to the old road. In 1794, Highway 34 ran “from Ezra Carpenter’s on the Wolfeboro Road to Elias Newton’s on the River Road” (meaning Route 10). Its S end continues as Grasse Road linking Reservoir Road to Trescott Road. In 1979, Town Meeting voted to discontinue the N part subject to gates and bars such as this one. The Town still owns the right of way.
- You'll soon reach signs indicating the college's shooting range; the old road probably passed through that area. Instead, you will turn R, away from the range, and skirt the L edge of the field, hiking uphill. The college's sugarhouse is visible at R. Does the sap from William Fullington's 120 maples boil there?
- You'll soon come upon an odd assortment of items at L, indicating the nursery school's outdoor classroom. It looks like fun!

- No more than 5 minutes from the gate, the narrow historic road becomes evident again, passing straight up into the woods. It climbs steadily on the R side of a narrow little valley, heavily wooded with large hemlocks and white pine. One can only imagine the strength required of a farm horse to draw a laden wagon up this hill. The remains of an old stone wall appear at R, confirming the nature of the old way. An unnamed stream tumbles down the hillside at L through a shaded and undisturbed valley. It's the clear waters of small, cool, well-oxygenated streams like this that provide relief for fish in the Connecticut River below.
- 10 minutes from the lower gate, you'll reach another. This is your turnaround point today. Pause to note a lovely small waterfall at L (photo). At R is undeniable evidence that the forest beyond was once the Fullingtons' diligently maintained pasture – many strands of barbed wire still attached to the stump of a long-dead tree.
- At this point, Highway 34 bears gently R and enters a maze of trails on Oak Hill before it ends at Reservoir Road, 1.8 miles from your starting point. That's a challenge for another day.
- Return to your car, enjoying the gentle conversation of the brook and wondering, as we do, why it never earned a proper name. We think it should be Fullington Brook.



The Hanover Conservancy, New Hampshire's oldest local land trust, is a private, non-profit membership organization independent of the Town of Hanover.