



HANOVER CONSERVANCY

FY 2015 ANNUAL REPORT

Protecting land and water in our community

BOARD OF DIRECTORS

Nancy Collier, *President*
Kristine McDevitt, *Vice President*
Jay Pierson, *Treasurer*
Stan Colla
Eric Evans
Karen Geiling
Tom Hall
Tom Jack
Ann Malenka
Hugh Mellert
Mary Sloat
Joanna Whitcomb
Jim Wooster

EMERITUS

Edwin Chamberlain
James Hornig
Robert Norman

Adair Mulligan
Executive Director

Courtney Dragiff
Stewardship & Outreach Coordinator



**HANOVER
CONSERVANCY**

*Protecting land & water
in our community*

THANK YOU

Our many supporters and friends make the Hanover Conservancy's programs possible.

CORPORATE CONSERVATORS

BE Fit Physical Therapy
Chase Brook Software
Chippers, Inc.
Full Circle Forestry
Hanover Lions Club
JMH Wealth Management, LLC
Law Office of Margaret A. Jacobs
Linde Mac Real Estate, LLC
Lyme Timber Company
Martha E. Diebold Real Estate
Mascoma Savings Bank
Pathways Consulting
Sotheby's International Realty
Wells Fargo Capital Finance

FOUNDATIONS

The Jack and Dorothy Byrne Foundation
Elizabeth Parkhill Charitable Trust
Emily Landecker Foundation
Crowell Family Foundation
Lubrano Family Charitable Foundation
Upper Valley Region Community Fund
of the NH Charitable Foundation
The Barrette Family Fund of the NH
Charitable Foundation
The Fraxinus Fund of the
NH Charitable Foundation

OTHER BUSINESS FRIENDS

Big Green Ts
Boloco
College Supplies
Hudson Forestry
Jim Block Photography

Lou's Restaurant
Morano Gelato
Nugget Theater
Ramuntos
Ravenmark, Inc.
Red Kite Candy
Stonehouse Mountain Mapping
Umpleby
Zimmermanns The North Face

COMMUNITY FRIENDS & PARTNERS

Connecticut River Watershed Council
The Conservation Fund
Dartmouth Ecological Methods class
Dartmouth Outing Club Woodsmen's Team
Etna Library
Hanover Conservation Commission
Hanover Historical Society
Hanover Improvement Society
Hanover Parks and Recreation
Howe Library
Inner Lift Yoga
Land Trust Alliance
Mascoma Chapter, NH Audubon
NH Humanities Council
Quabbin to Cardigan Partnership
Sierra Club of the Upper Valley
Trust for Public Land
Upper Valley Land Trust
Upper Valley Mountain Bike Association
Upper Valley Trails Alliance
Vital Communities of the Upper Valley
Winter Center for Indigenous Traditions
Youth in Action

Cover photo: Moose Mountain's majestic north peak in autumn.

LETTER FROM THE PRESIDENT

Hanover Conservancy friends and neighbors,

It is gratifying to see the number of Hanover Conservancy members grow by over 10 percent this year. We take this as a vote of support and extend a heartfelt thank you for your participation in conserving the natural side of our town. We remain dedicated to protecting Hanover's sensitive lands and committed to coaxing all of you outside to enjoy them.

With a strengthening of the economy, pressure has again increased on local land sales and development. To keep pace, we need to act quickly and diligently to identify and protect Hanover's most critical lands. Your financial support is the key to having the resources to remain engaged in the drive to keep open land green and vulnerable land undeveloped.

As our Land Conservation report on climate change indicates, our work is timely and strategic. Stewarding this lovely community requires constant and thoughtful vigilance, which is why we are so grateful for your partnership. The more of us involved in this mission, the better!

Please join us on one of our many upcoming trips this year. We would like to share part of the Hanover outdoors that is likely the reason many of us love living here.

Sincerely,



Nancy Collier, *President*



President Nancy Collier



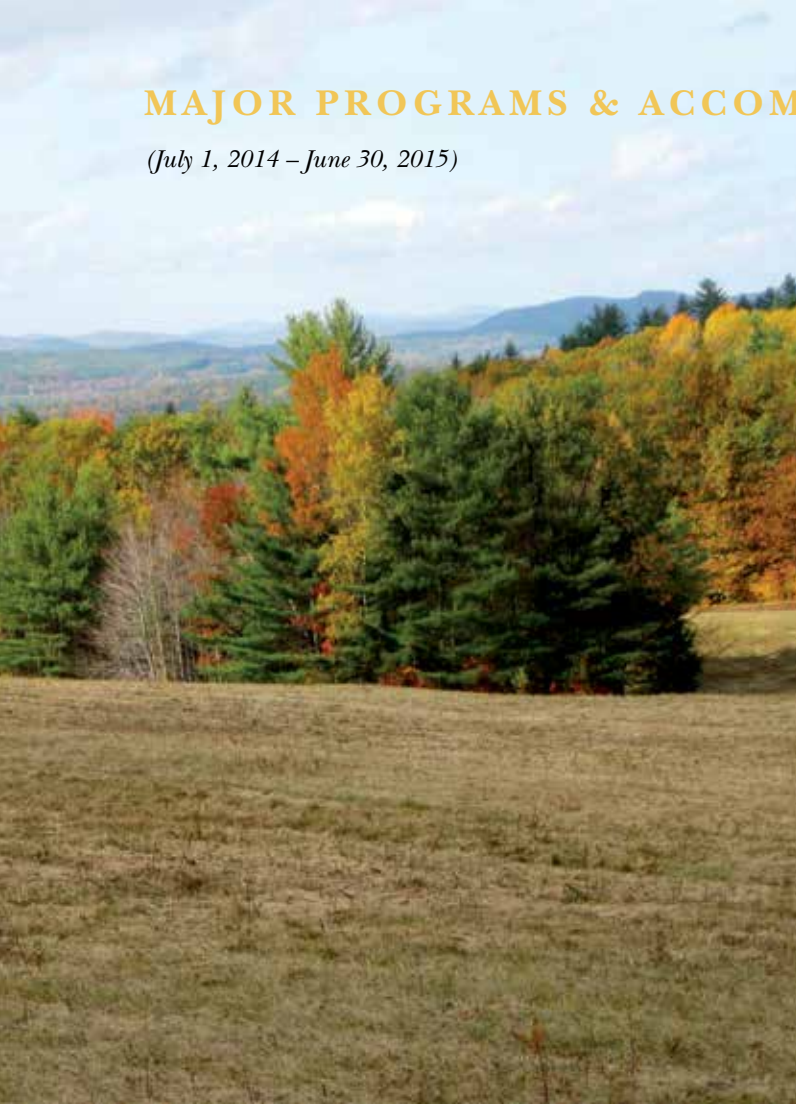
The **Hanover Conservancy**, the oldest local land trust in New Hampshire, strives to protect the land and waters of our community through land conservation and stewardship, education, and advocacy for conservation-oriented public policy.

Celebrating its 54th year, the Conservancy is a private, not-for-profit, membership organization. While not affiliated with the Town of Hanover, the Conservancy partners frequently with the Town and other local and regional organizations.

*Mill Pond beavers enjoy a holiday snack.
Photo by Kay Shumway*

MAJOR PROGRAMS & ACCOMPLISHMENTS / FY 2015

(July 1, 2014 – June 30, 2015)



Land Conservation

“Think globally, act locally” is a familiar saying. The global issue of climate change guides our conservation priorities here at home in Hanover. Mindful of the effects of increasing severe storms and rising temperatures, we have incorporated a focus on flood security and higher elevation habitat into our conservation planning. Using computerized mapping, we have now conducted an intensive analysis of each region of town — the densely settled Connecticut River corridor, the rolling central rural landscape, and the remote eastern ridge of Moose Mountain, and identified strategic priorities for each. We work to ensure that the natural side of Hanover remains intact to provide clean water, protection from heavy stormwater runoff, and a cool retreat for wildlife. Opportunities for healthy outdoor recreation close to home have always been high on our list.



Our holdings grew this year with a conservation easement on the **Moister Meadow**, the generous gift of F. Corbin Moister, Jr. Protecting this beautiful open meadow and its forested rivulets protects water quality and floodwater retention in **Slade Brook**. Moister Meadow’s conservation also preserves beautiful views and an increasingly rare example of an historic agricultural landscape.

Left: Moister Meadow. Photo by Courtney Dragiff



Another prime example is on **Moose Mountain** where generous gifts of conservation easements will protect not only public access to a well-loved network of trails, but also the primary headwaters of **Mink Brook**, the highest water body in town, and a series of early 19th century historic sites. Protecting cool forest high on the ridge near other protected lands expands the space wildlife can count on to escape warm temperatures in the valleys below.

On the other side of Hanover, we are supporting the owner of **Nathan's Garden** in conserving this beautiful oasis in a downtown neighborhood. We are also active behind the scenes to protect several high-priority parcels in partnership with private landowners and with the Town. We welcome inquiries from those interested in conserving their land.

Education

Our outdoor program grew yet again, drawing 395 people on trips ranging from off-trail winter wildlife tracking on Moose Mountain to a forestry tour at Huntington Hill, a spring wildflower walk, and Balch Hill Kite Day. Following our new focus on Hanover's heritage, we toured Etna's historic Storrs Farm and led a large group into the restricted Trescott Company lands to explore cellar holes and other historic sites. We celebrated the 15th anniversary of Mink Brook Nature Preserve's protection with a festive gathering at the water's edge and a guided walk to consider the Preserve's Abenaki connections. Bear expert Ben Kilham updated another standing-room-only crowd on the social life of these wild Mink Brook neighbors.

Dartmouth professor and HC board member Carl Renshaw leads a geology trip to the Mayor-Niles Forest on Moose Mountain.

OUR PROTECTED LANDS

OWNED BY THE HANOVER CONSERVANCY

Balch Hill Natural Area – 21 acres

Off Grasse & Hemlock Roads

Greensboro Ridge Natural Area – 113 acres

Off Greensboro Road & Velvet Rocks Drive

Mayor-Niles Forest – 92 acres

Off Three Mile Road

Mink Brook Nature Preserve – 112 acres

Off Route 10 & Brook Road

Lower Slade Brook Natural Area – 35 acres

Off River Road

Tunis Brook Mill Lot – 1.5 acres

Off Goose Pond Road

PROTECTED BY A HANOVER CONSERVANCY CONSERVATION EASEMENT OR DEED RESTRICTION

Angelo Tanzi Natural Area – 15.8 acres

Adjacent to Mink Brook Nature Preserve / Owner: Town of Hanover

Huntington Hill/Upper Slade Brook – 31.8 acres

Off Hanover Center Road / Owner: private landowner

McKinley Tract – 125.7 acres

Off Wolfeboro & Goose Pond Roads / Owner: Town of Hanover

Moister Meadow – 21 acres

Off Dogford Road / Owner: private landowner

Rinker-Steele Natural Area – 23.6 acres

Off Route 10 / Owner: Town of Hanover

Lower Slade Brook Natural Area – 3 acres

Off Purling Brooks Drive / Owners: private landowners

South Esker – 14 acres

Adjacent to Pine Knoll Cemetery / Owner: Town of Hanover

Our first Hanover Trails Challenge, in partnership with the town's Parks and Recreation Department, was such a success that we have done it again, with registration up by 50%. Two deserving Hanover High School seniors won our second annual Environmental Science Scholarship Award. Subscriptions to our monthly e-newsletter are up again, this time by 24%. Our e-publications also include occasional newsletters for Mink Brook and Balch Hill neighbors and an even more active Facebook page. Find trail maps and much more on our website.



*Pig and Wolf model Hanover Trails Challenge t-shirts.
Photo by Gail McPeck*

Advocacy & Public Policy

We have been a clear voice for environmentally responsible public policies ever since support for natural resource protection zoning in Hanover led to our founding in 1961. This year we advocated for more intensive deer management in Hanover as the NH Fish and Game Department asked for



Executive Director Adair Mulligan in the field.

comment on its ten-year game management plan. We continue to assist the Trescott Company in planning for management and use of the public water supply lands. The Conservancy also drew attention to possible outcomes of a proposed zoning amendment on sensitive riverfront land.

Stewardship

Volunteers and generous business sponsors helped us devote much effort to our protected lands this year. At Balch Hill, we completed our overhaul of the management plan and built more sustainable paths for the Maple and Grasse Road Trails. At Mink Brook, we published an expanded map and guide, pulled invasive garlic mustard, and monitored 2000 native trees and shrub plantings. At Greensboro Ridge, Trumbull-Nelson built us a beautiful trailhead kiosk. All three properties received attention to prevent the spread of invasive, non-native plants, in our effort to demonstrate good land stewardship and provide healthy natural habitat. At the Mayor-Niles Forest, we built a new gate and are planning new trails. We value the spirit and commitment of each of our stewardship committees and trail monitors, and welcome new volunteers.



Above: Hanover High School woodshop students

Right: Volunteer Joe Danna with his newly built trail entrance at the Mayor-Niles Forest

Left: Nicole Cormen contemplates the Connecticut River



CONSERVATION LEGACY CIRCLE



The morning sun illuminates Mink Brook as it tumbles off Moose Mountain. Photo by Joe Danna

You can continue your support for Hanover's natural places beyond your lifetime. We invite you to join our Conservation Legacy Circle by making a planned gift to the Hanover Conservancy. Such a gift realizes your vision for a healthy community. Our work, and the lives and landscapes we influence, can be your legacy.

Help us widen the circle!

Nancy Collier
Jim Hornig
Adair Mulligan
Everett Poisson
Andrew Samwick
Katherine Staples



Jim Hornig, Professor Emeritus of Environmental Sciences at Dartmouth College, planned ahead to continue his conservation legacy. A former Conservancy president and long-time member of Hanover's Planning Board, Jim has held the lamp aloft for conservation in our community for many years.

“My wife, Evalyn, and I are pleased that we can continue this work by dedicating a portion of our estate to the Hanover Conservancy.”

Jim Hornig at our 50th anniversary celebration at Balch Hill.

EXECUTIVE DIRECTOR'S REPORT

This has been a banner year! We recorded more members, more protected acres, stronger support from local businesses, more trip participants, and more improvements to our preserves than ever before in our over half-century history. The confidence and support of the Byrne Foundation gave us a substantial boost as we launched our new strategic plan, VISION 2020. We protected a beautiful meadow in the Slade Brook watershed, adding to previously protected lands and further protecting the brook's water quality, open habitat, and views of an historic agricultural landscape.

We are delighted that Courtney Dragiff (shown right) has joined our staff as Stewardship and Outreach Coordinator. Over 100 inspiring volunteers are also sharing their time and talent, including our hard-working board of directors, members of our various committees, and those lending a hand out on the trails. Along the way, we worked with a growing number of public and private partners, from the town libraries, conservation commission, and recreation department to the Hanover Historical Society, Upper Valley Trails Alliance, Hanover Improvement Society, Upper Valley Land Trust, and Pine Park Association, among many others.



We hope you'll join us as we pursue our vision of a healthy, natural Hanover.

A handwritten signature in black ink that reads "Adair D. Mulligan".

Adair Mulligan, Executive Director

*Carpet of Cornus canadensis
(bunchberry) at the Mill Pond Forest on
Moose Mountain. Photo by Bill Mlacak*

We recorded more members, more protected acres, stronger support from local businesses, more trip participants, and more improvements to our preserves than ever before in our over half-century history.

REASONS TO CELEBRATE



Two major anniversaries remind us of times when a choice of two paths lay ahead for some treasured places. In each case, the path less traveled was taken, and that, as Frost said, has made all the difference.

*Bear twins from the Mink Brook Nature Preserve.
Photo by Bryan Marquard*



Fifteen years ago, the wild forest we know as the **Mink Brook Nature Preserve** was slated to become a 30+-lot subdivision. This year we celebrated a happy change of fate for the mink, bears, and human neighbors of the brook. Family-friendly festivities included a children's stream exploration, visits from special community members, and (maybe best of all!) — a chance to sample Mink Tracks Gelato, concocted for the event by our friends at Morano Gelato.

Back indoors at our December Annual Meeting, we took an armchair tour of the fascinating history of the place with Jay Barrett, once a little boy who played knee-deep in the brook. Did you know that in 1770, the offer of this very land persuaded Eleazar Wheelock to choose Hanover as the home for his new college? Today, our Preserve and its trails are a beloved retreat just steps from downtown.

*Children explore Mink Brook at the 15th anniversary celebration.
Photo by Linde McNamara*





A similar specter haunted lower **Slade Brook** ten years ago. The lovely waterfalls and shaded glens were part of 33 acres targeted for high-end home lots. Wise heads on the Planning Board, including our own Jim Hornig, persuaded the developer to cluster the homes away from the brook, arranging them instead on a former gravel pit and leaving half of the land in its natural state. Today Slade Brook tumbles undisturbed through the Jim and Evalyn Hornig Natural Area. Its neighbors and many more who walk the brook-side path will be able to enjoy it forever.



Left: One of the waterfalls on Slade Brook. A young family visits the Jim and Evalyn Hornig Natural Area at Lower Slade Brook.

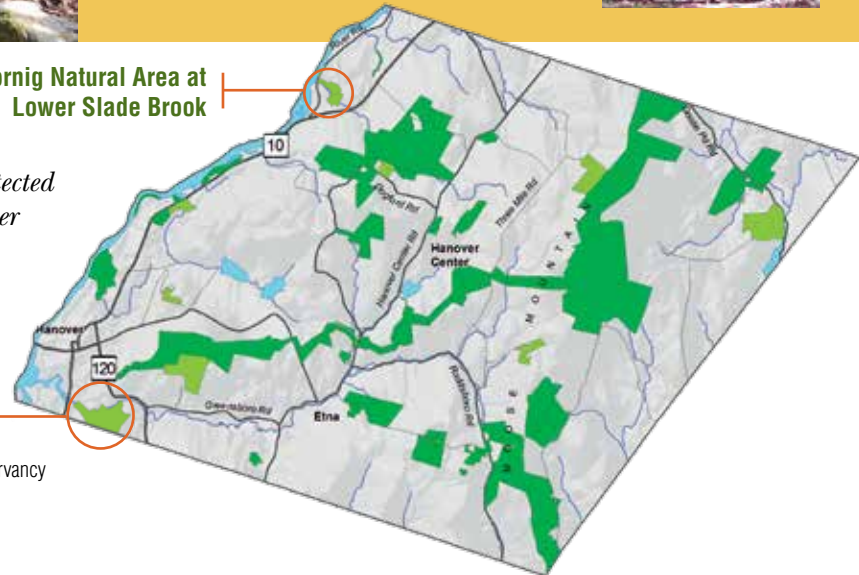
These successes remind us that much work lies ahead, both to guide careful growth and to protect Hanover's most important natural places.

Hornig Natural Area at Lower Slade Brook

Permanently Protected Lands in Hanover

Mink Brook Nature Preserve

- Land conserved with Hanover Conservancy
- Other permanently conserved land

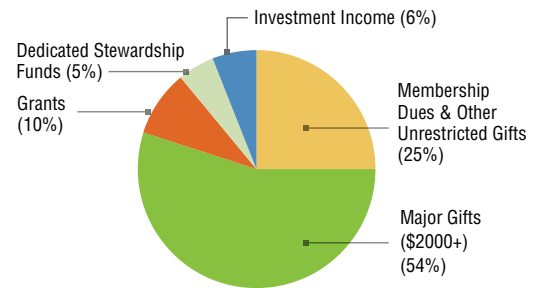


FINANCIAL REPORT *As of June 30, 2015*

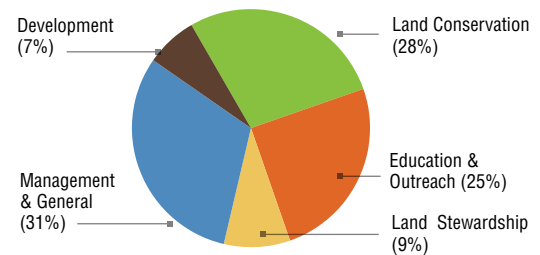
	2015	2014
ASSETS		
Cash & investments, unrestricted	\$ 149,015	\$ 29,528
Cash & investments, restricted	\$ 467,270	\$ 468,877
HC Fund of NH Charitable Fund	\$ 28,966	\$ 29,817
Land owned for conservation purposes*	\$ 774,296	\$ 682,296
Other [receivables, prepaid rent, office equipment and land improvements net of depreciation]	\$ 7,914	\$ 9,099
Total Assets	\$ 1,427,461	\$ 1,219,617
NET ASSETS		
Unrestricted net assets	\$ 569,773	\$ 457,838
Temporarily restricted net assets	\$ 58,392	\$ 54,483
Permanently restricted net assets**	\$ 799,296	\$ 707,296
Total Net Assets	\$ 1,427,461	\$ 1,219,617
SUPPORT AND REVENUE		
Individual contributions	\$ 271,353	\$ 72,534
Membership income	\$ 24,027	\$ 16,383
Grants	\$ 21,736	\$ 59,654
Investment income	\$ 15,557	\$ 54,372
Total Support & Revenue	\$ 332,673	\$ 202,943
EXPENSES		
Programs	\$ 77,454	\$ 104,619
Management and general	\$ 38,622	\$ 39,098
Fundraising	\$ 8,753	\$ 5,923
Total Expenses	\$ 124,829	\$ 149,640
INCREASE IN NET ASSETS		
	\$ 207,844	\$ 53,303
NET ASSETS, beginning of year	\$ 1,219,617	\$ 1,166,314
NET ASSETS, end of year	\$ 1,427,461	\$ 1,219,617

*The Town of Hanover presently assesses the value of Hanover Conservancy-owned properties at \$1,190,100
 ** Reflects the value of recently acquired lands

INCOME SOURCES



EXPENSES



A copy of the 2015 financial statement is available for review at our office.

Barred Owl at Balch Hill

THANK YOU

Our many volunteers continue a long tradition of caring for our lands, leading our trips, and helping in so many other ways.

Balch Hill Stewardship Committee: Clyde Barbour, Wayne Barstad, Supreet Bauer, Len Cadwallader, Ed Chamberlain, Rob Chapman, Anne Evans, Gail McPeek, Rob Harris, Ryan Johnson, Barbara McIlroy, David Pollock, Lois Roland, Laura Rosenthal, Sarah Tally.

Greensboro Ridge Stewardship Committee: Wendy Conquest, Alan DiStasio, John Joline, Doug McIlroy, Jill Kearney Niles, Steve Shadford, Jim Wooster.

Mink Brook Stewardship Committee: Jim Barrett, Bryant and Marilyn Denk, Dave Dent, Cal Felicetti, Brenda Knight, Jill Marquard, Cam Rankin, Roger Soderberg, Dev Sodhi, Douwe Wieberdink.

Slade Brook Stewardship Committee: Kathy Harvard, Gail McPeek, Hugh Mellert, Daniel Morrison.

TRIP LEADERS: Tim Bent, Len Cadwallader, George Clark, Joe Danna, Anne Evans, Dave Falkenham, Tom Jack, Gail McPeek, Hugh Mellert, David Merker, John Moody, Adair Mulligan, Carl Renshaw, Alice Schori, Bill Shepard, Alcott Smith, Jeff Smith.

OTHER VOLUNTEERS:

Tony Abbate, Sharry Baker, Jason Beaton, Jason Berard, Willy Black, Bob Boon, Laura Conkey, Eileen Daley, Joe Danna, Shawn Donovan, Betsy Eaton, Steve Fowler, Rory Gawler, Sam Grose, Mike Hall, Craig Layne, Jim Lustenader, Jill Marquard, Betsy McClain, Tim McDermott, Betsy McGean, Linde McNamara, Bill Mlacak, Everett Poisson, Barbara Prince, Margaux Reckerd, and Deborah Schaner.



Naturalist Alcott Smith leads a winter wildlife tracking trip on Moose Mountain.



HANOVER CONSERVANCY

16 Buck Road
Hanover, NH 03755
(603) 643-3433

www.hanoverconservancy.org



Non Profit Org.

US Postage

PAID

White River Jct, VT

Permit No. 73