

Moose Mountain Lodge



© Jim Block



Thank you, Jim!

Noted Etna photographer
Jim Block photo-documented
the historic and one-of-a-kind
Moose Mountain Lodge,
with Kay Shumway's gracious
permission, as she was preparing
to move in July, 2018





© Jim Block



© Jim Block



© Jim Block



Living room

© Jim Block



Kay spins
wool from
her Angora
goats

© Jim Block



© Jim Block



© Jim Block

A talented
woodworker,
Kay crafted
this live-edge
piece



Kay took the photo of the bear through her window

© Jim Block



© Jim Block



Living room.

Kay built the settee at left

© Jim Block



The millstone embedded over the mantel came from a late 18th/early 19th century mill on nearby Mink Brook just below Mill Pond.

The Mill Pond Forest conservation easement now protects that historic site.

© Jim Block



Walker Weed made
the hanging chair

© Jim Block



© Jim Block



© Jim Block

Tulla
official Lodge dog



West porch
view south

© Jim Block



© Jim Block

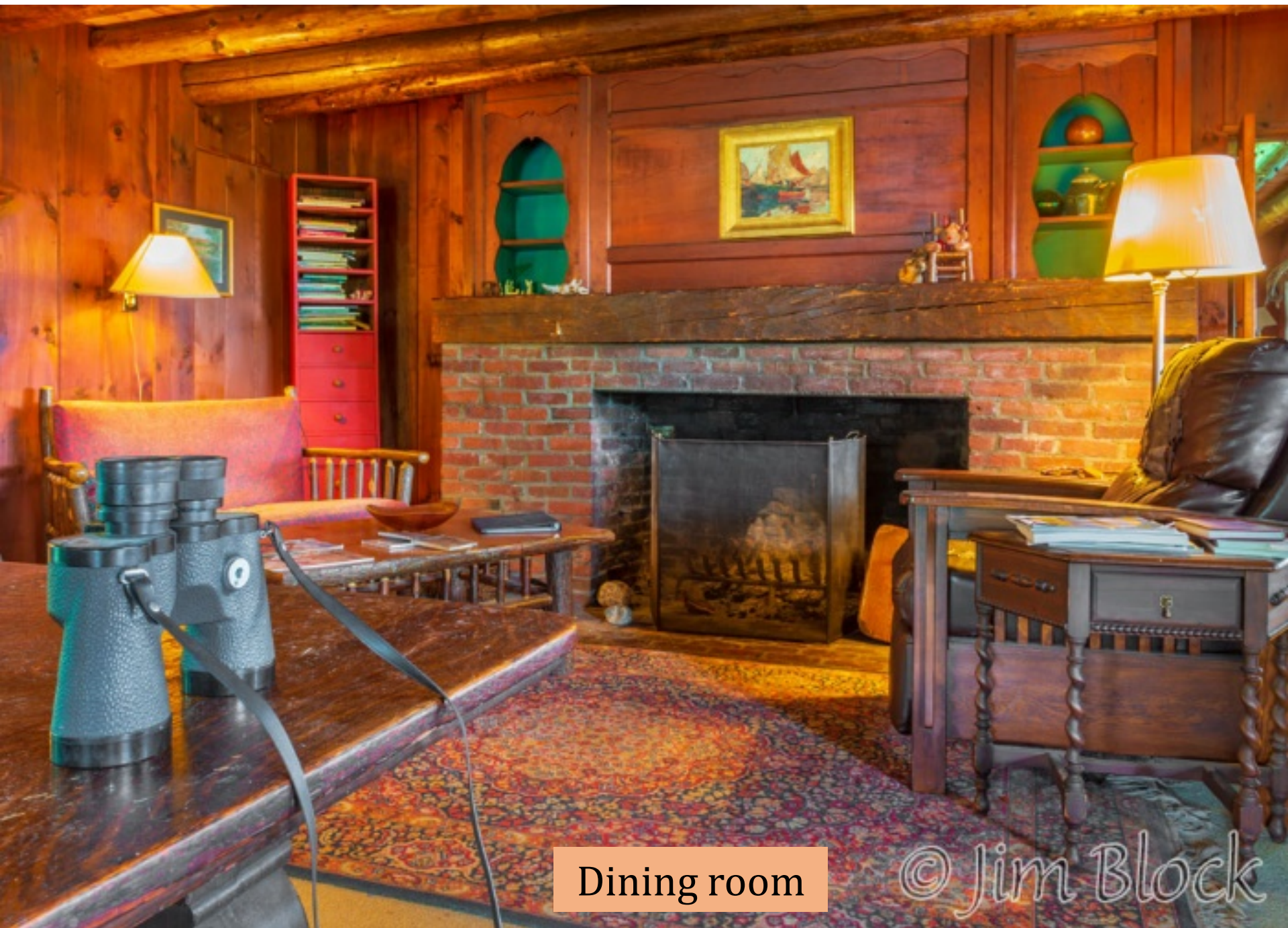
West porch,
view north



© Jim Block

Totem pole created by Bill Robes and campers during the Camp Moose-Hi years. Kay and Peter Shumway found it in the woods downhill from the lodge, and rescued it.





Dining room

© Jim Block



Dining room

© Jim Block



Dining room

© Jim Block



Dining room

© Jim Block

Moose Mountain Lodge's
moose, over the stairway



© Jim Block



Upstairs hall



Upstairs bedroom



Upstairs closet

© Jim Block





Downstairs bar room

© Jim Block



Bar pig – gift from a friend. The Shumways had a large pet pig named Sylvia Poggioli



Player piano in the downstairs bar room



Kitchen



© Jim Block

Kitchen



Wooden bowls turned by Kay; pictures of Peter

Ski room





Ski room



Kay Shumway

© Jim Block



© Jim Block

From the covered porch, one can admire the western view of Killington in Vermont – rain or shine